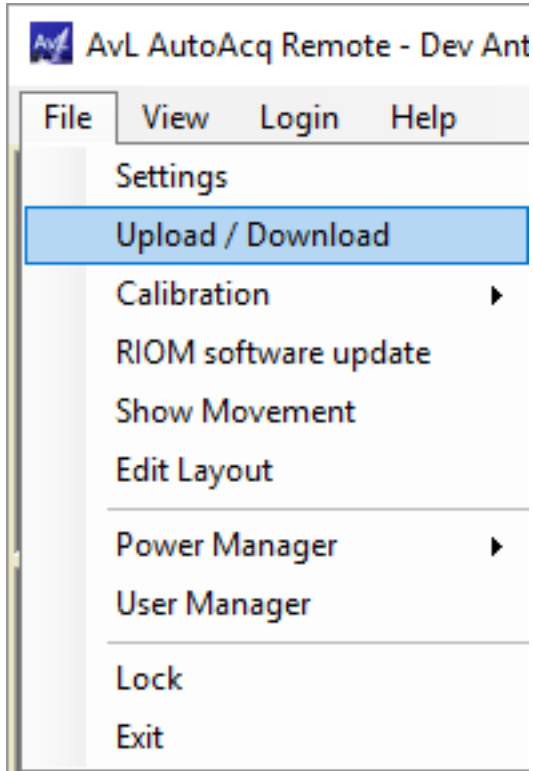
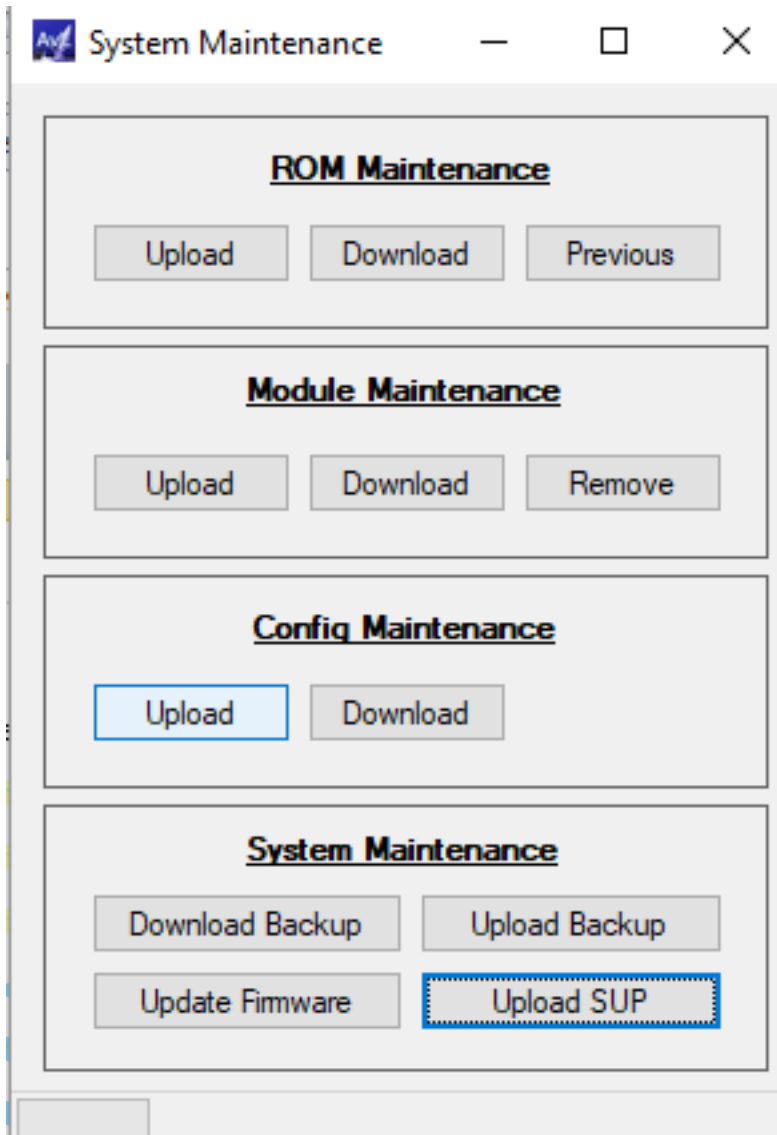


You can use the configuration file attached to change the limits. It is an “encrypted” config which will only alter the Azimuth CW Limit and User Azimuth CW Limit. When uploading the configuration file you will be prompted whether it is an encrypted configuration file or not:

First select the Upload/Download Option from the File Menu:



Next Select the Upload button under Config Maintenance:



Acknowledge that it will stop the Controller and then Select Yes for whether or not it is an Encrypted Configuration File:

